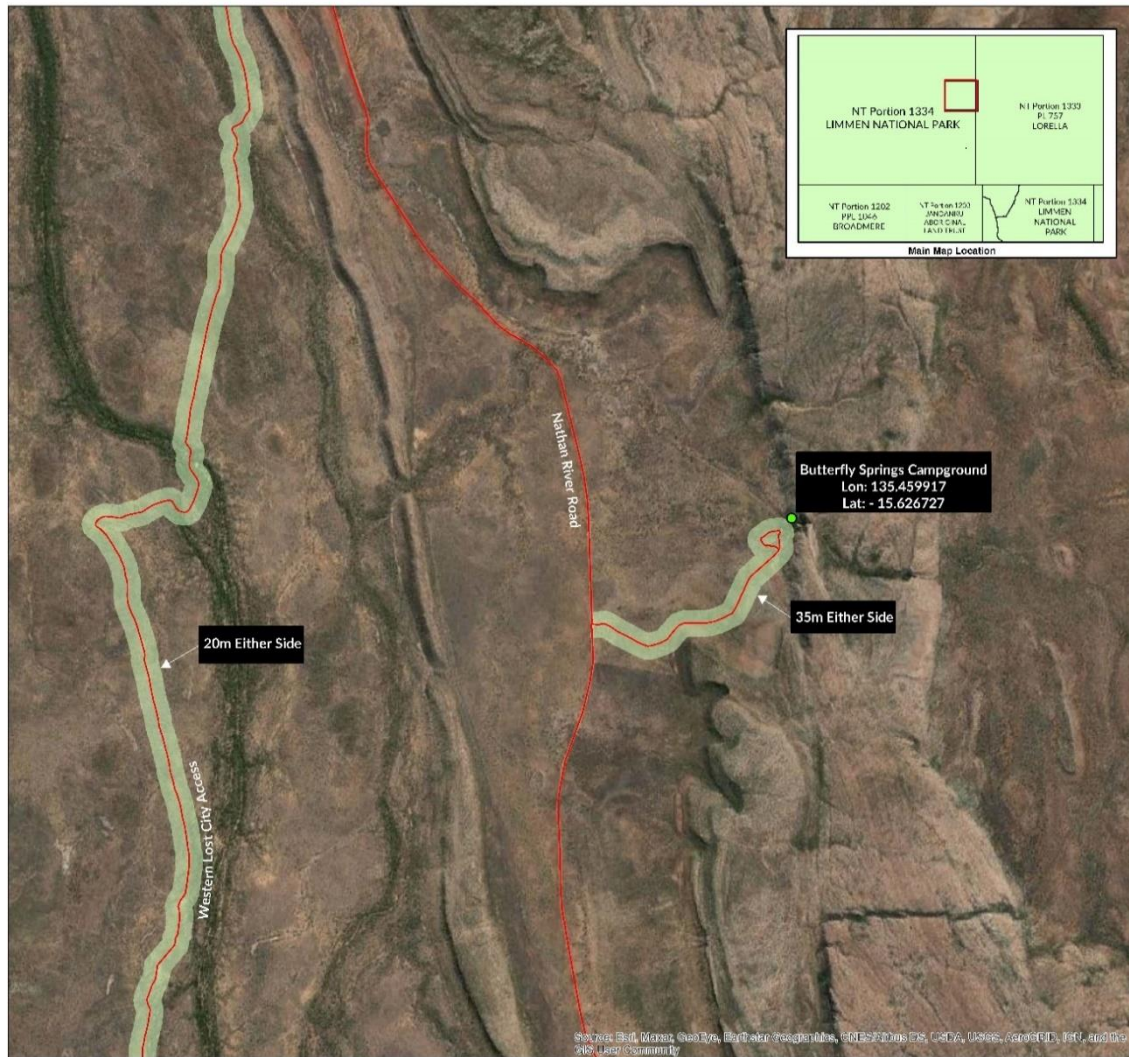


## **SCHEDULE E**

### **Maps of Roads described above at clause 15(c)**





**LEGEND**

- Roads
- Butterfly Springs Campground Access
- Western Lost City Access

**DATA SOURCE:**  
 Cadastral, Topographic, Road Centreline and image data sourced from Information Services Section, Department of Infrastructure, Planning and Logistics

TOPO-250K GEODATA Series 2 Topographic source data courtesy Geoscience Australia Canberra. © Copyright Commonwealth of Australia (Geoscience Australia) 2006  
 Raster 100K data copyright © GEOIMAGE Pty Ltd 1998

Raster 100K source data courtesy Geoscience Australia, Canberra. © Copyright Commonwealth of Australia, Geoscience Australia www.ga.gov.au

**MAP PRODUCED BY:** Parks and Wildlife Commission of the Northern Territory, 18/05/2021.

**MAP DOCUMENT:** butterfly\_springs\_access\_road\_nathan\_river.mxd.



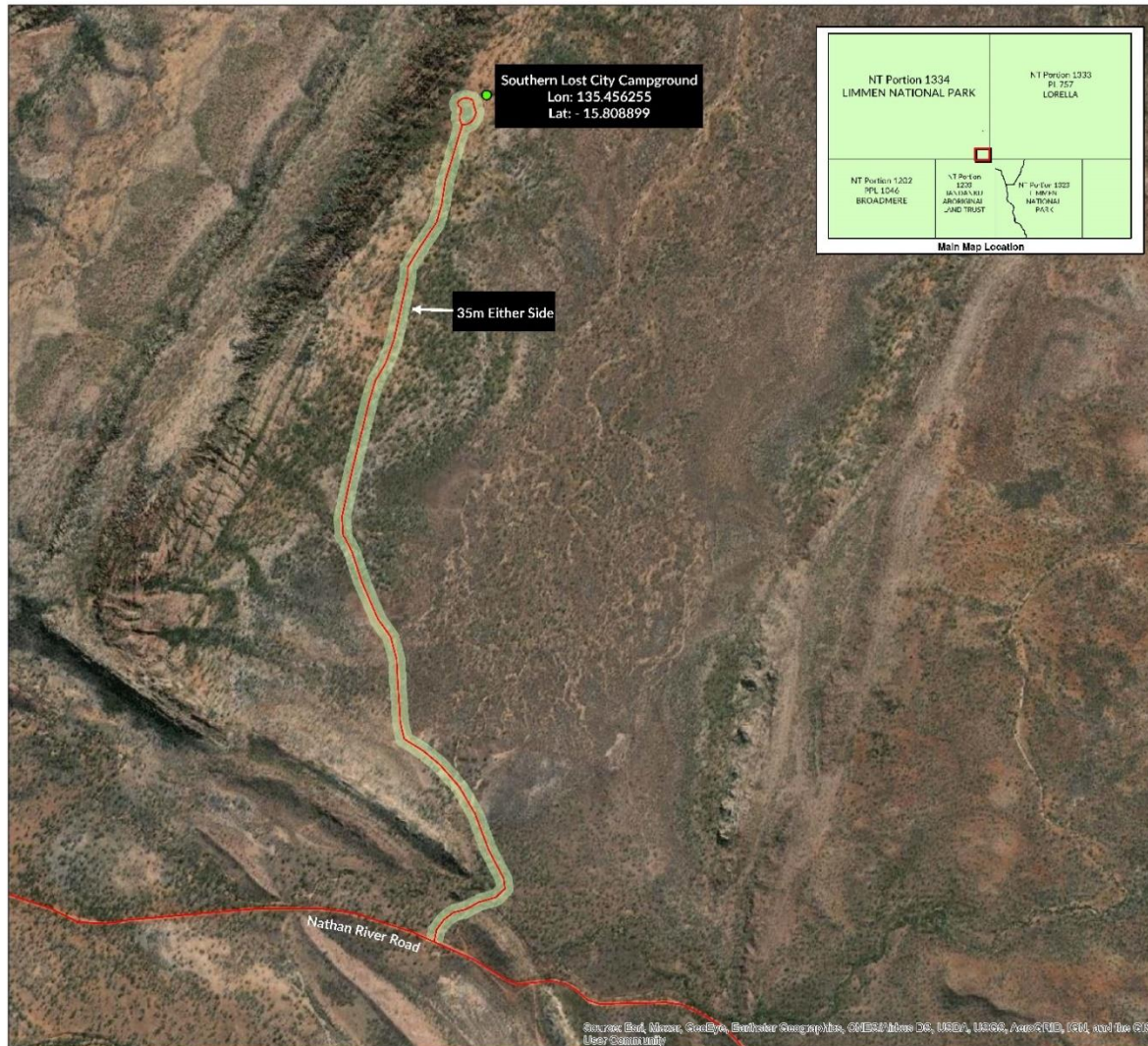
Projection: Universal Transverse Mercator (UTM)  
 Map Grid of Australia (MGA) Zone 57  
 Horizontal Datum: Geocentric Datum of Australia (GDA91)



© Northern Territory of Australia

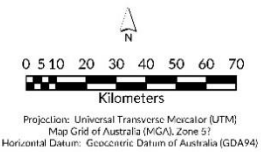
The Northern Territory of Australia does not warrant that the product or any part of it is correct or complete and will not be liable for any loss, damage or injury suffered by any person as a result of its inaccuracy or incompleteness.

**Nathan River  
 Native Title Determination  
 Butterfly Springs Campground Access  
 Limmen National Park**



**LEGEND**  
 — Roads  
 Southern Lost City Access

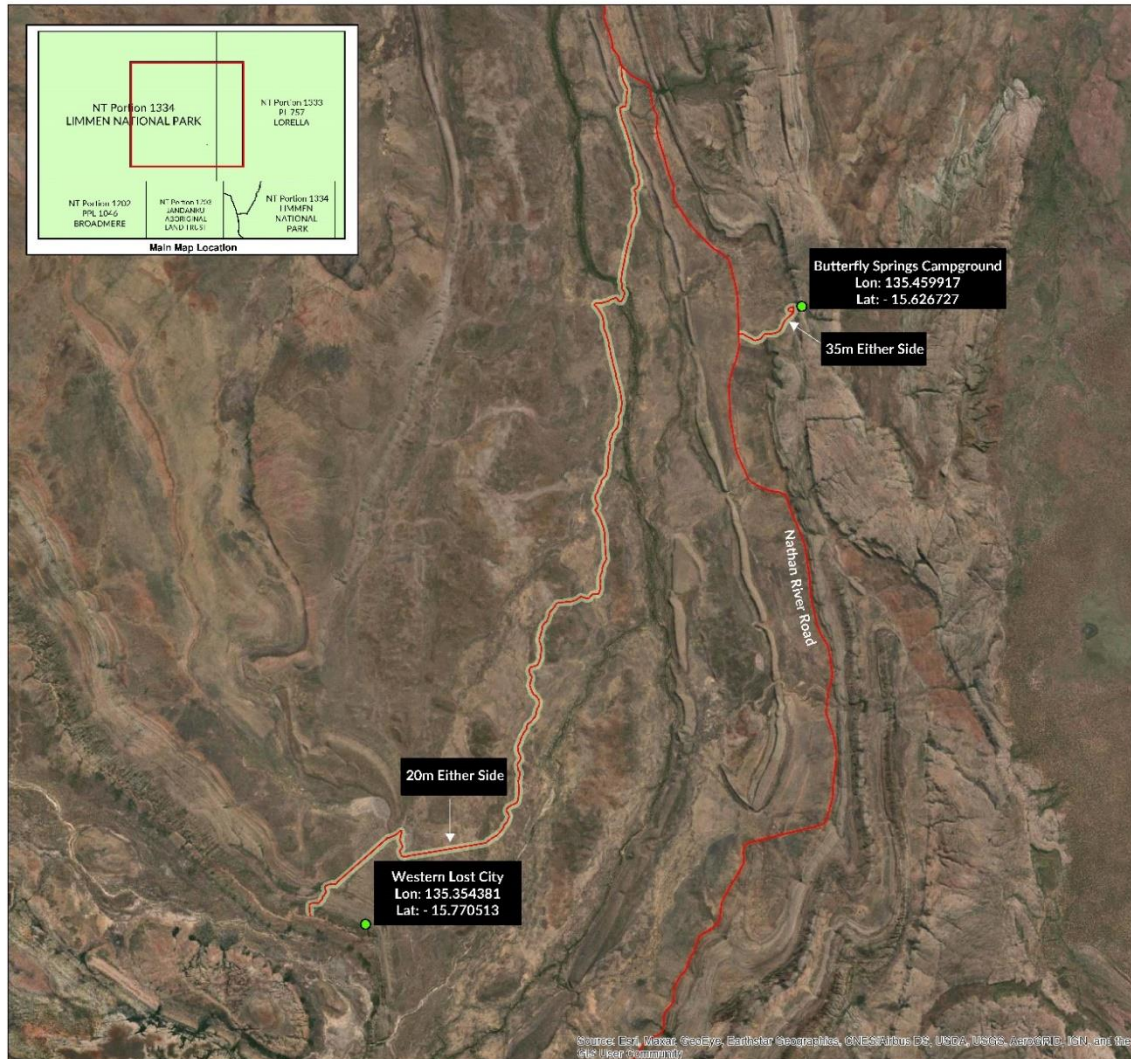
**DATA SOURCE:**  
 Cadastral, Topographic, Road Centreline and Image data sourced from Information Services Section, Department of Infrastructure, Planning and Logistics  
 TOPO-250K GEODATA Series 2 Topographic source data courtesy Geoscience Australia, Canberra. © Copyright Commonwealth of Australia (Geoscience Australia) 2006  
 Raster 100K data copyright © GEOIMAGE Pty Ltd 1998  
 Raster 100K source data courtesy Geoscience Australia, Canberra. © Copyright Commonwealth of Australia, Geoscience Australia www.ga.gov.au  
**MAP PRODUCED BY:** Parks and Wildlife Commission of the Northern Territory, 18/05/2021.  
**MAP DOCUMENT:** Southern\_Lost\_City\_Access\_Nathan\_River.mxd



Projection: Universal Transverse Mercator (UTM)  
 Map Grid of Australia (MGA) Zone 51  
 Horizontal Datum: Geocentric Datum of Australia (GDA94)



© Northern Territory of Australia  
 The Northern Territory of Australia does not warrant that the product or any part of it is correct or complete and will not be liable for any loss, damage or injury suffered by any person as a result of its inaccuracy or incompleteness.  
**Nathan River  
 Native Title Determination  
 Southern Lost City Campground  
 Access Road  
 Limmen National Park**





**LEGEND**

- Roads
- Catfish Waterhole Access

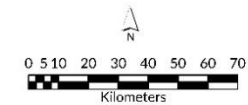
**DATA SOURCE:**  
 Cadastral, Topographic, Road Centreline and Image data sourced from Information Services Section, Department of Infrastructure, Planning and Logistics

TOPO 250K GEODATA Series 3 Topographic source data courtesy Geoscience Australia, Canberra. © Copyright Commonwealth of Australia (Geoscience Australia) 2006  
 Raster 100K data copyright © GEOIMAGE Pty Ltd 1998

Raster 100K source data courtesy Geoscience Australia, Canberra. © Copyright Commonwealth of Australia, Geoscience Australia www.ga.gov.au

**MAP PRODUCED BY:** Parks and Wildlife Commission of the Northern Territory, 13/05/2021.

**MAP DOCUMENT:** Catfish\_Waterhole\_Access\_Nathan\_River.mxd.



Projection: Universal Transverse Mercator (UTM)  
 Map Grid of Australia (MGA), Zone 57  
 Horizontal Datum: Geocentric Datum of Australia (GDA94)

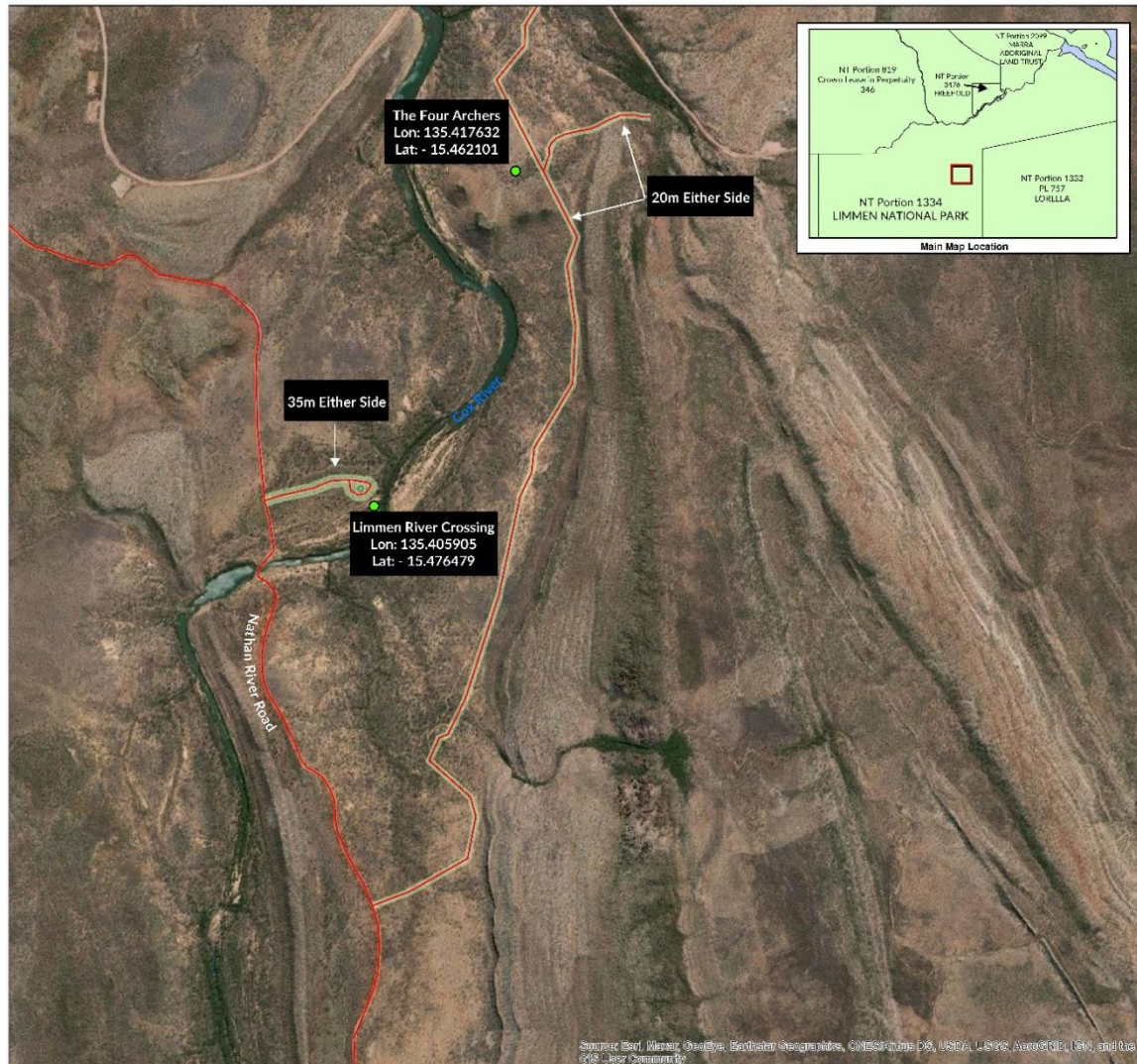


© Northern Territory of Australia



The Northern Territory of Australia does not warrant that the product or any part of it is correct or complete and will not be liable for any loss, damage or injury suffered by any person as a result of its inaccuracy or incompleteness.

**Nathan River  
 Native Title Determination**

**Catfish Waterhole Access Road  
 Limmen National Park**



**LEGEND**

-  Roads
-  Limmen River Crossing Access
-  Four Archers Access Road

**DATA SOURCE:**  
 Cadastral, Topographic, Road Centreline and Image data sourced from Information Services Section, Department of Infrastructure, Planning and Logistics

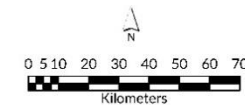
TOPO-250K GEODATA Series 3 Topographic source data courtesy Geoscience Australia, Canberra. © Copyright Commonwealth of Australia (Geoscience Australia) 2006

Raster 100K data copyright © GEOMIMAGE Pty Ltd 1998

Raster 100K source data courtesy Geoscience Australia, Canberra. © Copyright Commonwealth of Australia, Geoscience Australia www.ga.gov.au

**MAP PRODUCED BY:** Parks and Wildlife Commission of the Northern Territory, 18/05/2021.

**MAP DOCUMENT:** Four\_Archers\_Access\_Nathan\_River.mxd.



Projection: Universal Transverse Mercator (UTM)  
 Map Grid of Australia (MGA), Zone 57  
 Horizontal Datum: Geocentric Datum of Australia (GDA94)



© Northern Territory of Australia

The Northern Territory of Australia does not warrant that the product or any part of it is correct or complete and will not be liable for any loss, damage or injury suffered by any person as a result of its inaccuracy or incompleteness.

**Nathan River  
 Native Title Determination  
 Four Archers Access / Limmen River Crossing Access  
 Limmen National Park**